



REJECTS

DEPARTMENT STORE

WALL COVERING
CURTAIN FABRICS
LIGHTING & RUGS
CHINA & GLASS
COOKSHOP
BEDDING
DRESS FABRICS
GALLERY
CHRISTMAS SHOP



123 St Clair Street, Kirkcaldy, Fife KY1 2BS
Tel. (01592) 655955. Fax (01592) 655722

Scottish Community Drama Association



**80th One-Act Play Festival
Eastern Division Final
29th - 31st March 2012 7:30pm
Lochgelly Centre, Lochgelly**

£2

Drawing: Robbie McArthur Primary 6 Lochgelly West Primary

The Path Tavern

Mid Street, Kirkcaldy
01592 263671



Join us on Facebook



*Bar lunches
Mon to Sat 12-14:30*

Come and enjoy the friendly atmosphere



Friends, it gives me great pleasure as Chairman of Scottish Community Drama Eastern to welcome you to the Kingdom of Fife and Lochgelly's beautifully re-designed creative learning centre for the Divisional Final of our 80th National One Act Play Festival.

My sincere thanks to Fife District Committee members for their organisational planning of this event.

Fundraising is currently a high priority for the Association and I urge you all to support our national initiatives by considering individual membership, joining our Patrons Scheme or purchasing the latest merchandise products.

We have an experienced adjudicator in Bruce Adam and I wish our nine teams every success in the competition with the two winning productions progressing to the Scottish Final being held at MacRobert, University of Stirling on 26-28 April.

Please take every opportunity to socialise with your fellow drama enthusiasts which is always a key element of our Festival scene.

Relax and have an enjoyable evening.

Stephen Lambert,
SCDA Eastern Division Chairman

WELCOME TO THE FESTIVAL

An advertisement for Canterbury Bells flower shop. The background is a close-up of a white daisy flower with green leaves. The text is overlaid on the image.

Canterbury Bells
... much more than just your local florist.

58 High Street
Kirkcaldy
KY1 1NB
T: 01592 646462
F: 01592 204790
E: flowers@canterburybells.co.uk
www.floristkirkcaldy.co.uk

gold award: flower shop of the year 2006



Bruce D. Adam

Bruce Adam is currently vice-chair of the Scottish Association of Speech and Drama Adjudicators (SASDA) with considerable experience of adjudicating Speech and Drama Festivals and judging international Writing Competitions. He has lectured in Drama, Acting, Production and English for many years. He is an Examiner for the Scottish Qualifications Authority and the Welsh Examination Board in Drama and

English. His involvement in Theatre as a performer and Director is eclectic, embracing everything from Shakespeare to Musical Theatre and street theatre to panto and he has written a number of much performed plays.

Tryst Theatre 'C'

Some Kind of Love Story

by Arthur Miller
This amateur production is presented by arrangement with Josef Weinberger Ltd

Angela Rhona Law
Tom Brian Paterson

Director – Alan Clark
Stage Manager – Jim Cairns

Scene: Angela's bedroom 11pm
Period: The present

This play contains strong language and scenes of a sexual nature.

Monument Performing Arts School present

"Baptie's Lass"

by James Scotland

three magical
maidservants

Maggie	Ailsa Murray
Maisie	Rebecca Mann
Morag	Mirren Mack
Martin Baptie	Jimmy Cairns
Eleanor Baptie	Kiera Murray
Colin Strachan	Sean Monaghan
Gavin Grant	Robert Armitage
Jenny Baptie	Amy Gibson
James Denburn	Paul Stirrat
Priest	Ailsa Murray
Patey	Mirren Mack

This production of Baptie's Lass is part of the RSC Open Stages Shakespeare Festival.

Director – Craig Murray

Scene: A Street in Cranstoun; Baptie's House
The Church; Denburn Hall

Stage Manager – Peter Tripney

Period: 1592

MPAS would like to thank our good friends from Tryst Theatre for their assistance with staging, props, sound and lighting.

Kirkcaldy Amateur Dramatic Society present

Ae Fond Kiss

by Ann Marie Di Mambro
Represented by MacFarlane Chard Assoc. Ltd

Lola Jacqui Zemmoura
Zed Michael Westwater

Director – Margaret Allan
Stage Manager – Iain McAlpine

Scene: A Flat in Central Glasgow
Period: Present

This play contains content that may cause offence.

There will be an interval of 15mins between plays when refreshments and a licensed bar will be available.

Outlook Tower Trophy Tryst
Festival Winner

Jean Fleming Quaich KADS
Best Comedy

Moffat Trophy KADS
Runner-Up

Fraser Neal Trophy Bowmy Players
Full Length Competition Winner

Bob Buchanan Salver Killin
Third Place

John Duncan Quaich Tryst
Highest Marks for ~~Acting~~ Production

Say Trophy St Serfs
Best Stage Decor

Ann Moar Quaich Monument
Scottish Life And Character

Jimmy Brown Trophy Bowhouse
Best Moment of Theatre Deputy Provost Cllr. Ian Chisolm

Wina Munro Quaich (for Acting)
Tryst



Leslie Amateur Dramatic Club (B) present**The Waves Roll In***by David Hutchison*

by arrangement with Josef Weinberger Limited

Mike	Martin Butler
Jane	Dillon Stewart
Sally	Jacqueline Hannan

Director – Nancy Butler
Stage Manager – Rab Sinclair

Scene: Promenade / Living Room
Period: The present

*This play contains language that may cause offence.***Bowhouse Drama Club****PVT Wars***by James McLure*One-act version by arrangement
with Josef Weinberger Limited

Woodruff Gately	Chris Cavanagh
Silvio	Robert Ainslie
████████████████████	████████████████████
Natwick	Colin Ferguson

Director – Margaret Kirkwood
Stage Manager – John Tripney

Scene: Outside terrace of
an army veterans' hospital
Period: 1970s

*This play contains language that may cause offence.***Edinburgh Peoples Theatre present****Sparkleshark***by Philip Ridley*

Jake	Kevin Edie
Polly	Sally-Ann Coxon
Natasha	Margaret Swan
Carol	Sammy Tait
Russell	Gary Cain
Buzz	Marion McKillop
Speed	Andrew Palmer
Shane	Nick Frew
Finn	Sally North

Director – Will MacIver
Stage Manager – Nigel Jarvis

Scene: ~~Edinburgh City Centre~~
Period: Now

*There will be an interval of 15mins between plays when refreshments and a licensed bar will be available.***St Serfs Players Bangholm present****The Mystery Tour***by Colin Calvert*

George	Colin Stirling Whyte
Jane	Phyllis Ross
Melody	Hollie Brown
Edie	Margaret Anderson
Mrs Beaumont	Dorsay Larnach
Louise	Alison Carcas

Director – Philip Wilson
Stage Manager – Sheila Paterson

Scene: A Bus Trip
Period: The present

Killin Drama Club present**“Swan Song”***by Vanessa Brooks*

Margaret	Glenda Mardon
Donald	Gordon Hibbert
Mimi	Alexandra Tigwell

Director & Stage Manager – Lesley Syme
Scene: An Office
Period: Circa 2000

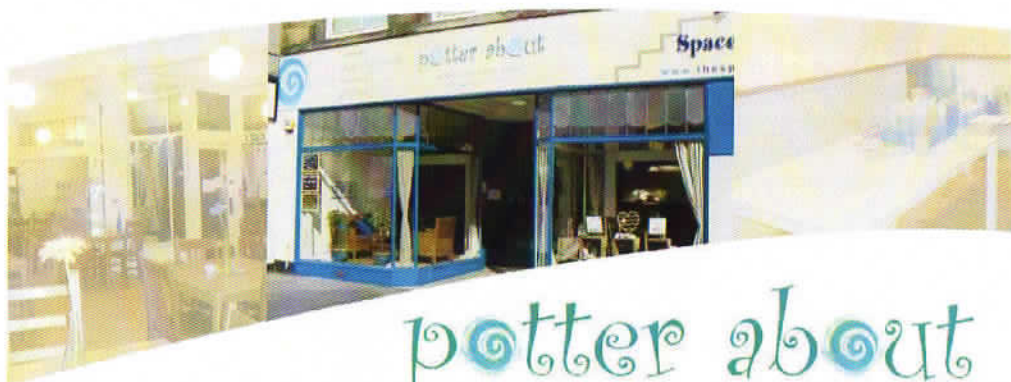
Aberdour Players (R) present**Say Something Happened***By Alan Bennet*Script changes by kind permission of United Agents Ltd.
on behalf of Alan Bennet

Mum	Esther Graham
Dad	Dave Buchanan
June Potter	Natalie Hardie

Director – Robin Smith
Stage Manager – Hamish Hardie

Scene: A Living Room
Period: Early 1980s

There will be an interval of 15mins between plays when refreshments and a licensed bar will be available.



potter about

ceramic cafe & play corner

Open 9am - 5pm

Come for lunch or freshly baked cakes

Real ground coffee

Friendly staff and relaxing atmosphere



Private function suite available for evening bookings:

- price per hour if self-catering
- price per head (we cater to your budget)

Excellent off street parking adjacent to the venue

Live music every Sunday afternoon

Ceramic painting

Childrens parties

**Potter About
253a High Street
Burntisland
KY3 9AQ**

**For Bookings
Tel: 01592 873680**



Patron Scheme

SCDA has reached a major Milestone with over £2500 per year pledged to SCDA funds through the Patron Scheme!

Thanks to our Patrons generosity, and by maximising the Gift Aid benefits, we are able to make funds available to develop the association and increase member benefits. To become a Patron you simply donate £5 per month by standing order, (or £60 annually by cheque) to SCDA. Patrons can remain anonymous if they wish.

Application forms are available here at the Centre or from SCDA HQ, or they can be downloaded from our website; www.scda.org.uk

Please contact us for more information

Email: headquarters@scda.org.uk

Phone: 01786 440077

Office hours: Mon – Thurs, 9:30am – 3.00pm

Handy Mac



Iain McAlpine - General Handyman

**Joinery, Plumbing, Electrical,
Decorating, Power Washing, Tilting,
Flat Pack Assembly
General Home Repairs**

**Tel: 01592 780988
Mobile: 07834424086**

Email: ihmcalpine@yahoo.co.uk

Scottish Community Drama Association

This weeks performances form part of a national festival involving over 150 plays from drama clubs throughout Scotland. Since 1926 the Scottish Community Drama Association has supported community drama, helped with festival organisation, youth summer schools, encouraging play-writing and providing professional coaching to members and their clubs.

To attract the financial support we need, our organisation has had to modernise procedures and presently there is a substantial need for fund raising. If you wish to make a donation to assist us or become an individual member of the S.C.D.A. contact an official at this festival and find out about the special offer we are currently promoting on individual membership, or contact us at Headquarters – Tel. 01786 440077

Thank You

***Our Thanks To all that have helped towards
the success of the Eastern Division Final***

**keddie's
pram shop**

6 - 10 Victoria Road, Kirkcaldy KY1 1DU
Tel: 01592 597020 Fax: 01592 590190

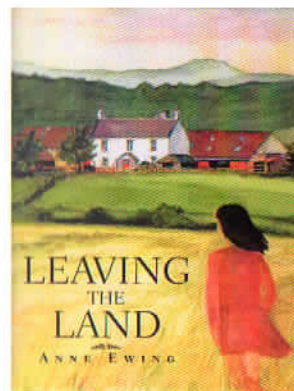
**VISIT OUR LARGE
SHOWROOM**

FOR A SELECTION OF
Prams, Cots, Buggies
Toys, Car Seats, Clothes
0-12 months etc.

STORAGE &
DELIVERY
AVAILABLE

FLEXIBLE
PAYMENT
OPTIONS
ASK IN STORE

Leaving all I've ever been, And everything I am,
Leaving the Land
(Eric Bogle)



Anne Ewing's LEAVING THE LAND

The story of the Rutherfords of
Pitkinny Farm, Auchterderran,
Fife, Scotland

"I stood alone looking at the freshly inscribed addition to the words on the headstone, so brief a description of two lives: their ages, the dates of their deaths. One word to describe my father's occupation: farmer. Another to name their home: Pitkinny. It seemed so little to convey the range of experiences they shared: success and disaster, joy and tragedy, love and antipathy, health and sickness."

**Order your copy now from your local bookseller
or from iuniverse.com or amazon.co.uk ISBN 978-1-4502-9634-2**

The kindness of friends, the warmth of toil, the peace of rest
(Lewis Grassic Gibbon)

Copyright © 2011 by Anne Ewing

